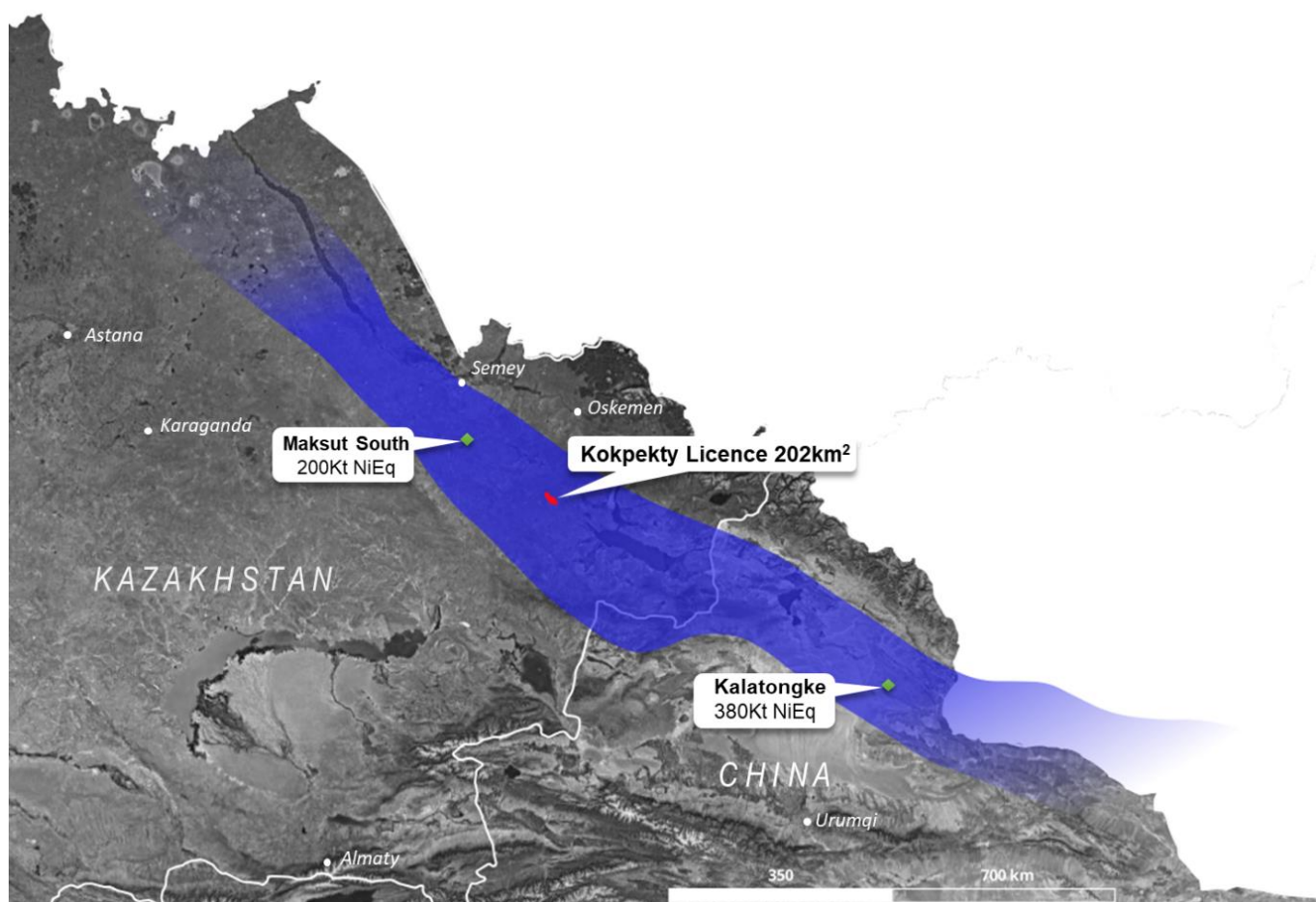




Introducing Altai Resources

Hunting supergiant nickel in Central Asia

- » Incubated as a portfolio company of Pallas Resources in early 2022 with the sole focus of exploiting the untapped nickel sulfide potential of Central Asia.
- » On the hunt for supergiant nickel sulfide systems in Kazakhstan.
- » First mover in the Altai nickel belt of Central Asia, a large (>1,100km) and severely underexplored province overlapping the same superplume as Norilsk.
- » World-class nickel sulfide generative team including Dr Steve Beresford.
- » Unique combination of outcropping sulfides and complete lack of electromagnetic surveys in a belt book-ended by producing nickel operations, a true rarity in the global nickel search space.
- » Altai's first licence (Kokpekty) hosts multiple targets with at surface Ni-Cu occurrences. Searching for Norilsk Cu-Ni analogues: large-scale concentrations of polymetallic sulfides formed by magma interaction with evaporites.



Contact

Simon Cooper
simon@pallasresources.com

Daniel Rickleman
daniel@pallasresources.com

Address and Web

2nd Floor Heathman's House,
19 Heathman's Rd
London, SW6 4TJ, UK

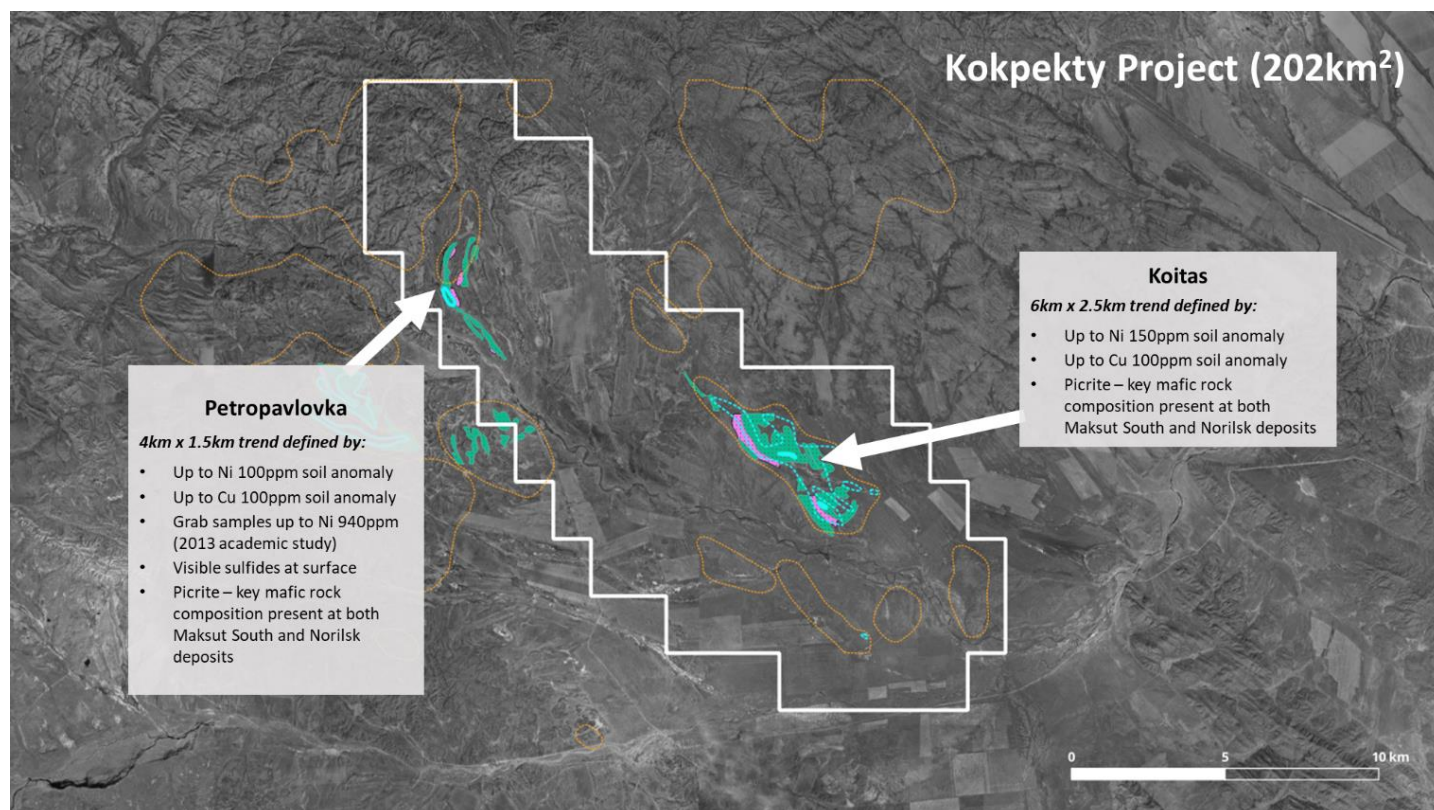
www.altai-resources.com
www.pallasresources.com



Company Snapshot

- » Incorporated early 2022 with sole focus of exploiting the untapped nickel sulfide potential of Central Asia.
- » Funded and incubated as a portfolio company of **Pallas Resources**:
 - A Central Asian explorer with a large portfolio of copper and gold projects in Kazakhstan.
 - Founding team with 15+ years in the region.
 - The largest privately held exploration datasets in Central Asia.
- » Bolstered team with global experts in nickel systems targeting:
 - Steve Beresford (Ex Chief Geo IGO, First Quantum & MMG, Principal Geo WMC Resources & BHP)
- » 18+ months defining prospective tracts within the Altai belt and identifying highest priority targets for acquisition.
- » First licence (Kokpekty) acquired late 2022 with additional applications pending.

Kokpekty Ni-Cu Licence (202km²)



Contact

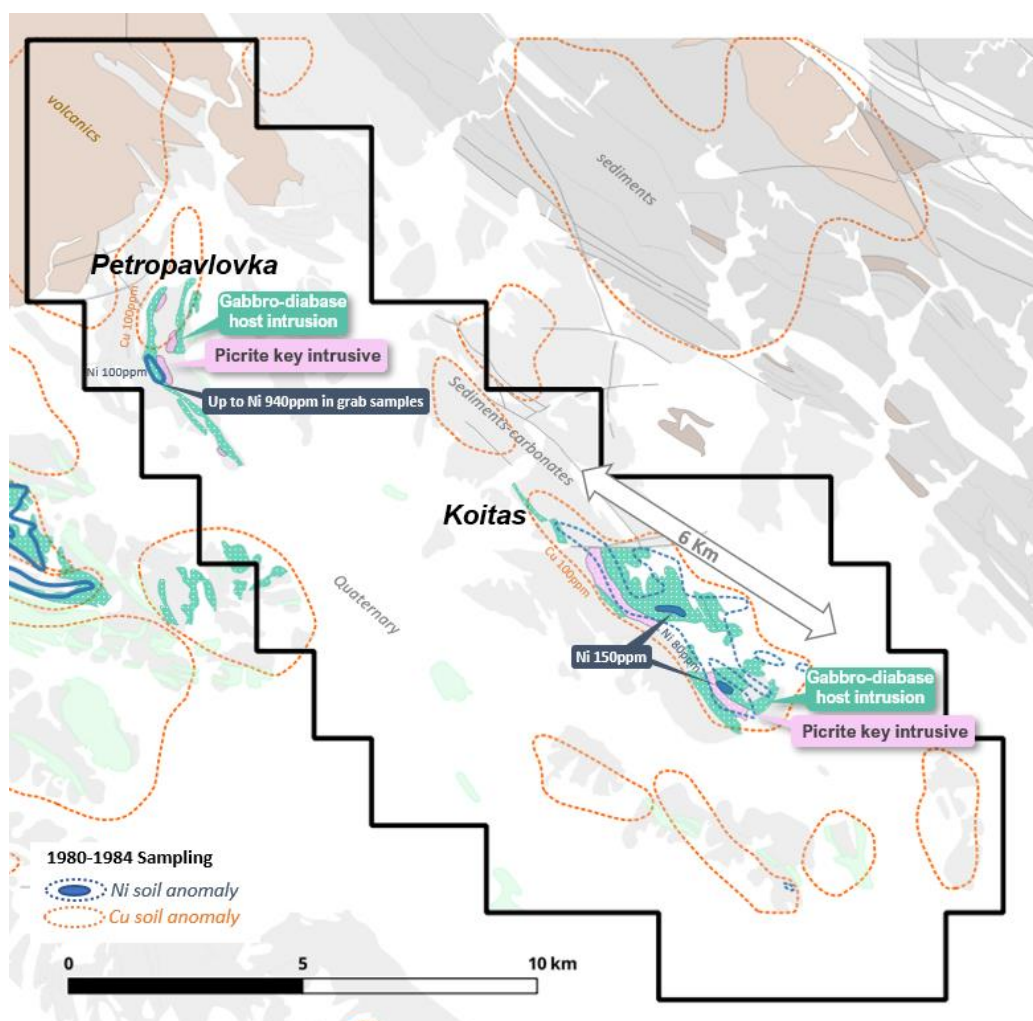
Simon Cooper
simon@pallasresources.com

Daniel Rickleman
daniel@pallasresources.com

Address and Web

2nd Floor Heathman's House,
19 Heathman's Rd
London, SW6 4TJ, UK

www.altai-resources.com
www.pallasresources.com



Target prospectivity deriving from multiple coincident indicators

- » Broad nickel and copper soil geochemical anomalism.
- » Picrites mirroring the Maksut South mine.
- » Shallow level differentiated Mafic-Ultramafic intrusives hosted by calc silicates.

Exploration thesis

- » Multiple targets potentially representing Ni-Cu sulfide deposits near surface or under shallow cover.
- » Belt not seen nickel exploration since 1970s and no history of EM surveys, a bare minimum in modern nickel sulfide exploration.
- » The Altai belt is part of the Tarim plume (one of the largest plumes globally) which overlaps the Siberian Traps, host to the world's largest nickel sulfide deposit Norilsk.

Contact

Simon Cooper
simon@pallasresources.com

Daniel Rickleman
daniel@pallasresources.com

Address and Web

2nd Floor Heathman's House,
19 Heathman's Rd
London, SW6 4TJ, UK

www.altai-resources.com
www.pallasresources.com

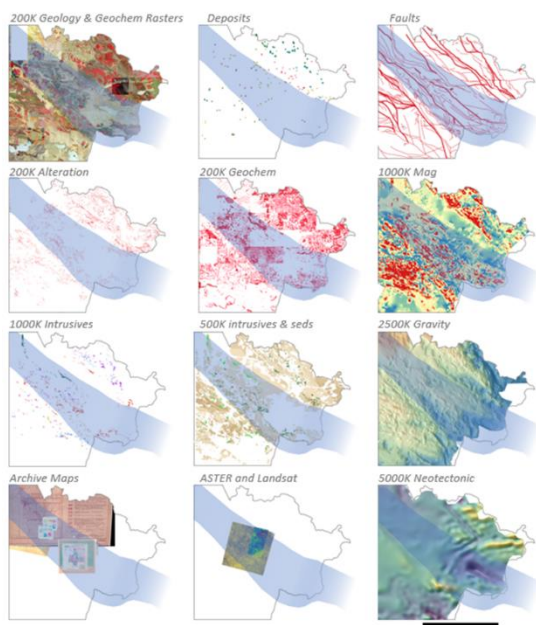


- » The age and geological setting of the Tarim is comparable to that of the Siberian Traps (Norilsk 251Ma; Altai belt 280Ma). The full extent of the Permian Tarim Plume is equivalent to the Siberian Traps (Norilsk) and extends across Central Asia.
- » Kalatongke and Maksut South Ni-Cu sulfide deposits to the NW and SE of Kokpekty indicate the right conditions for mineralization present within the Altai belt. Both deposits were discovered during the 1970s from outcropping occurrences. Thanks to a lack of exploration, management believes these deposits are only an indication of the region's true potential.
- » Searching for Norilsk analogues: large-scale concentrations of polymetallic sulfides formed by magma interaction with evaporites.

Exploration strategy

- » Completed initial field reconnaissance mapping and geochem to further define target areas.
- » First-pass ground and UAV-mounted magnetic survey now 90% complete.
- » Ground EM survey planned for Q3 2023. EM a key tool in modern nickel sulfide exploration which has yet to be applied to the Altai belt. Effectively opens a new search space not accessible to previous explorers (prior discoveries made in 1970s) - being anything immediately below surface.
- » Drill targets defined for 2024 campaign.

Big data and generative expertise driving a step-change in discovery probability



One of the largest private exploration datasets

One of the largest country-wide exploration datasets covering Kazakhstan, the result of a multi-year digitization process allowing the company to extract maximum value from historic data.

Belt-scale approach to targeting and ground acquisition

Big data approach provides unique ability to carry out belt-scale generative work and target ranking.

World class generative team

Team with global expertise in nickel systems targeting who drove an 18+ month review defining prospective tracts within the Altai belt and identifying highest priority targets for acquisition.

First mover consolidation advantage

Altai has identified multiple highly prospective target areas ready for rapid consolidation of additional ground.

Contact

Simon Cooper
simon@pallasresources.com

Daniel Rickleman
daniel@pallasresources.com

Address and Web

2nd Floor Heathman's House,
19 Heathman's Rd
London, SW6 4TJ, UK

www.altai-resources.com
www.pallasresources.com