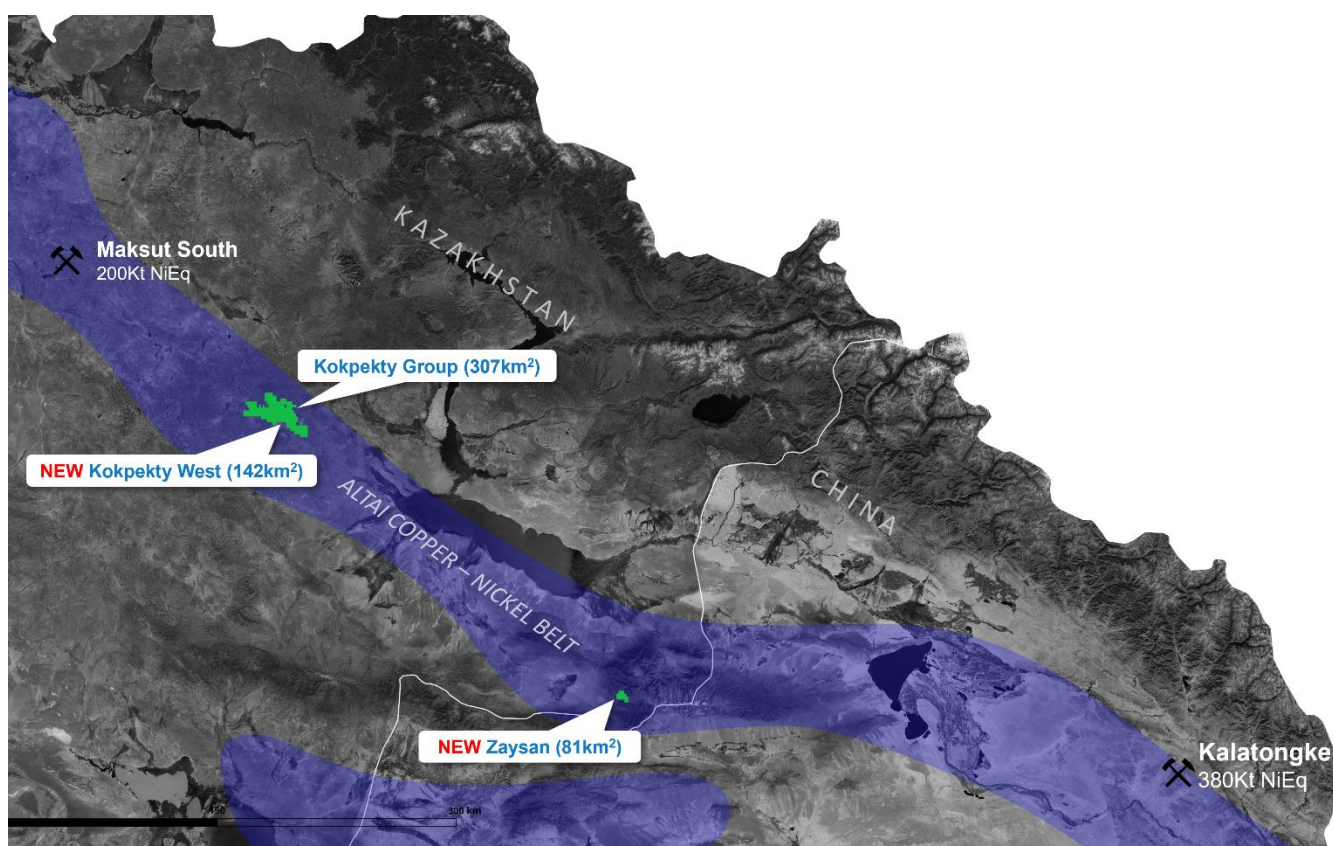




EM Survey Identifies Multiple Conductors for First-Pass Drill Campaign

- » The first-ever EM survey at Altai's flagship Kokpekty copper-nickel license is now complete. The survey tested several distinct intrusive trends within the project.
- » Multiple conductors were identified, including targets at bifurcation points, which are key concentrators of sulphide mineralisation.
- » Altai plans to test these targets for prospective copper-nickel sulphide mineralization as part of a scout drilling campaign in late 2024.
- » Altai has leveraged its first-mover status in this emerging copper-nickel belt, with two new licenses granted at Zaysan (81 km²) and Kokpekty West (142 km²).
- » The company plans to replicate its successful exploration strategy (high-resolution magnetic and EM surveys) to quickly delineate new drill targets within a district-scale portfolio (>530 km²).
- » Founded in early 2022, Altai is dedicated to exploiting the untapped copper and nickel potential of Central Asia, specifically targeting supergiant copper-nickel sulphide systems.



Altai has acquired two new projects within the Altai copper-nickel belt of Kazakhstan.

Contact

Simon Cooper (simon@pallasresources.com)
Daniel Rickleman (daniel@pallasresources.com)

Address

2nd Floor Heathman's House,
19 Heathman's Rd, London, SW6 4TJ, UK

Web

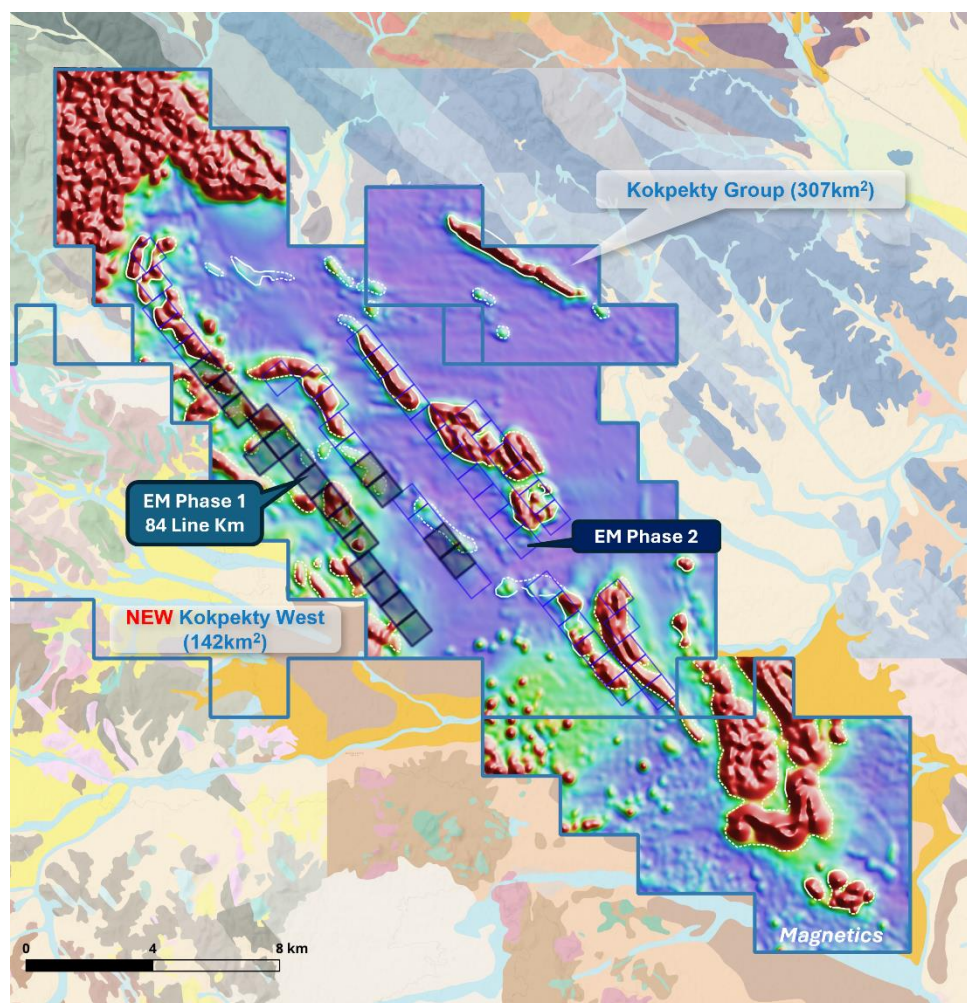
www.altai-resources.com
www.pallasresources.com

Completion of First-Ever EM Survey

The completion of a high-resolution magnetic survey in 2023 delineated several prospective outcropping intrusions extending under shallow cover, alongside identifying multiple key bifurcation points, which act as potential focal points for high-grade sulphide mineralisation. Altai's recently completed Phase 1 EM Survey, covering 84-line kilometers, tested the electromagnetic response across four of the twenty targets identified by the magnetic survey. Data processing is ongoing, with results expected in the coming weeks. Preliminary findings have identified two distinct target types:

- » **Bifurcation Points:** Multiple high priority targets have been identified at key bifurcation points – where sulphides would be forced out of magma, leading to potential for concentrations of massive sulphide mineralisation. Targets include those analogous to those at Bears Brook pit in Noril'sk, where one intrusion bifurcates into two creating a focal point for mineralised horizons.
- » **Contact Targets:** Several targets identified along the contact of the sulphidic sediment (host-rock) and intrusives.

A Phase 2 EM Survey, covering 120-line kilometers, is planned for later this season to test the remaining 14 targets, alongside an initial scout drilling campaign.



Phase 1 EM survey now complete, Phase 2 planned later this field season alongside scout drilling.

Contact

Simon Cooper (simon@pallasresources.com)
Daniel Rickleman (daniel@pallasresources.com)

Address

2nd Floor Heathman's House,
19 Heathman's Rd, London, SW6 4TJ, UK

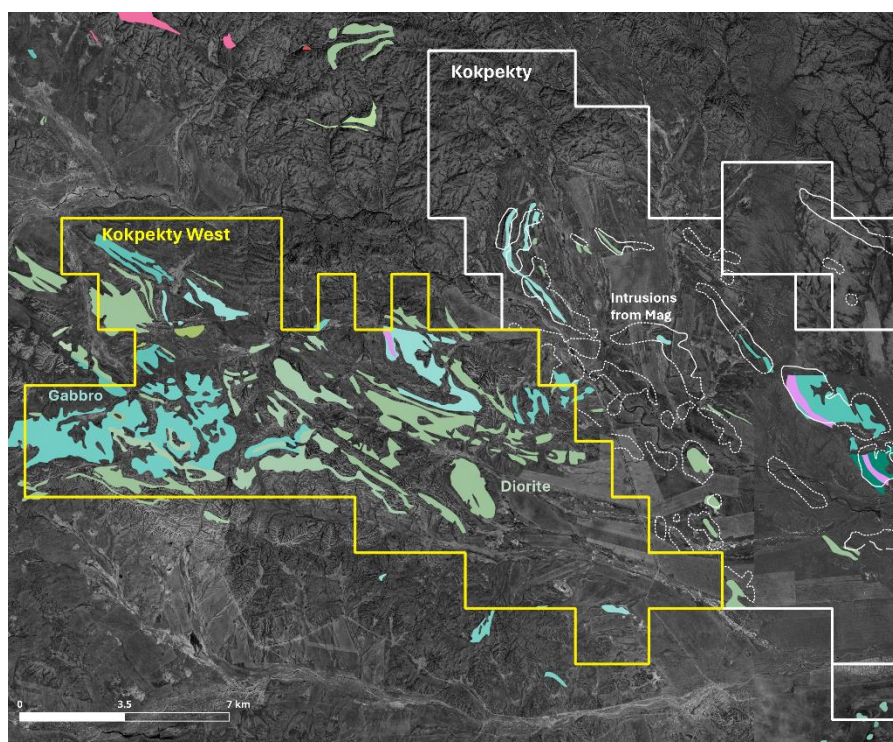
Web

www.altai-resources.com
www.pallasresources.com



Acquisition of New Exploration Licences: Zaysan and Kokpekty West

Altai is pleased to announce the acquisition of two additional exploration licences in this emerging copper-nickel belt, specifically at Zaysan and Kokpekty West. With these new licences, Altai's portfolio now encompasses a district-scale land package of 530km² (53,000 hectares). Building on its first-mover advantage in this region, Altai plans to replicate what it believes is a straightforward and effective exploration strategy. The company will conduct high-resolution magnetic and electromagnetic surveys to swiftly identify, prioritize, and test new drill targets within the expanded portfolio. Notably, within Altai's flagship Kokpekty licence, the company demonstrated its capability to quickly advance a grassroots conceptual target to drill-ready stage within 18 months.



Newly granted Kokpekty West licence: a prospective mafic trend which extends 20km west of the Kokpekty flagship.

Contact

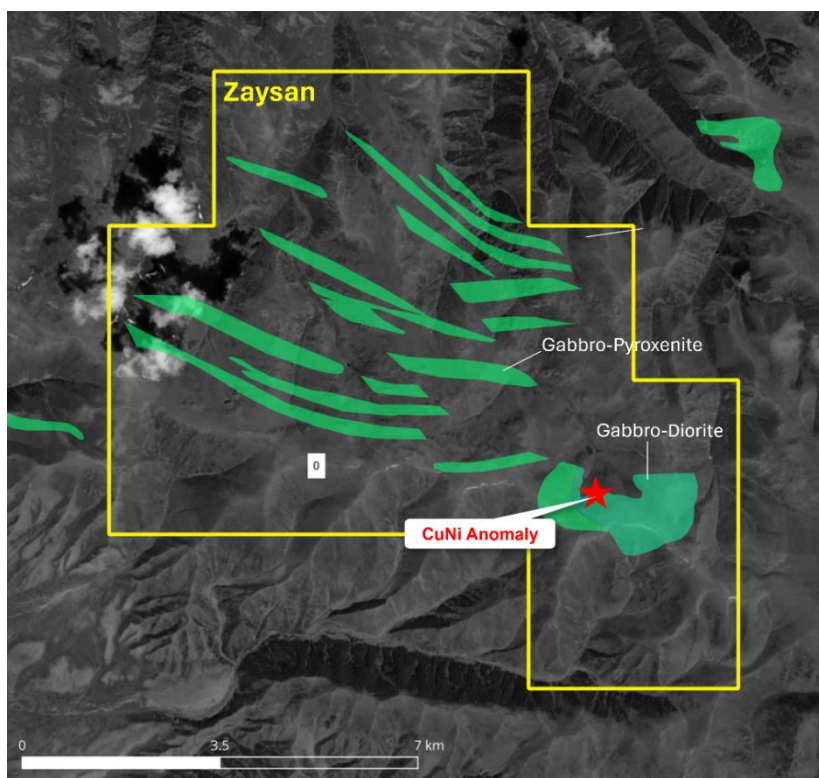
Simon Cooper (simon@pallasresources.com)
Daniel Rickleman (daniel@pallasresources.com)

Address

2nd Floor Heathman's House,
19 Heathman's Rd, London, SW6 4TJ, UK

Web

www.altai-resources.com
www.pallasresources.com



Newly granted Zaysan licence: first licence granted in the southeast of the belt.

About Altai Resources

First Mover on the Hunt for Supergiant Copper and Nickel

- » Altai founded in early 2022 with a mission to exploit the untapped copper and nickel potential of Central Asian, specifically targeting supergiant copper-nickel sulphide systems in Kazakhstan.
- » First mover in the Altai nickel-copper belt of Central Asia, a large (>1,100km) and severely underexplored province overlapping the same plume as Noril'sk.
- » Parallels with Noril'sk evident across multiple key features at a regional, belt and camp-scale - underscoring a genuine and rare likeness to a truly world-class orebody.
- » World-class generative team including Dr Steve Beresford and Dr Dan Core.
- » Secured first-mover status having consolidated a district-scale land position (>500km²) across five projects.

Contact

Simon Cooper (simon@pallasresources.com)
Daniel Rickleman (daniel@pallasresources.com)

Address

2nd Floor Heathman's House,
19 Heathman's Rd, London, SW6 4TJ, UK

Web

www.altai-resources.com
www.pallasresources.com